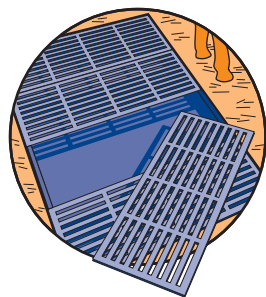
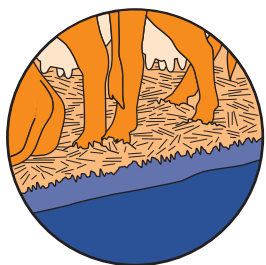


Recommendations for different cattle housing systems



1 Slatted floor units

Treat the entire floor area immediately after cleaning out the dung pit. Pay special attention to the edges where dung may remain on slats.



2 Deep litter units

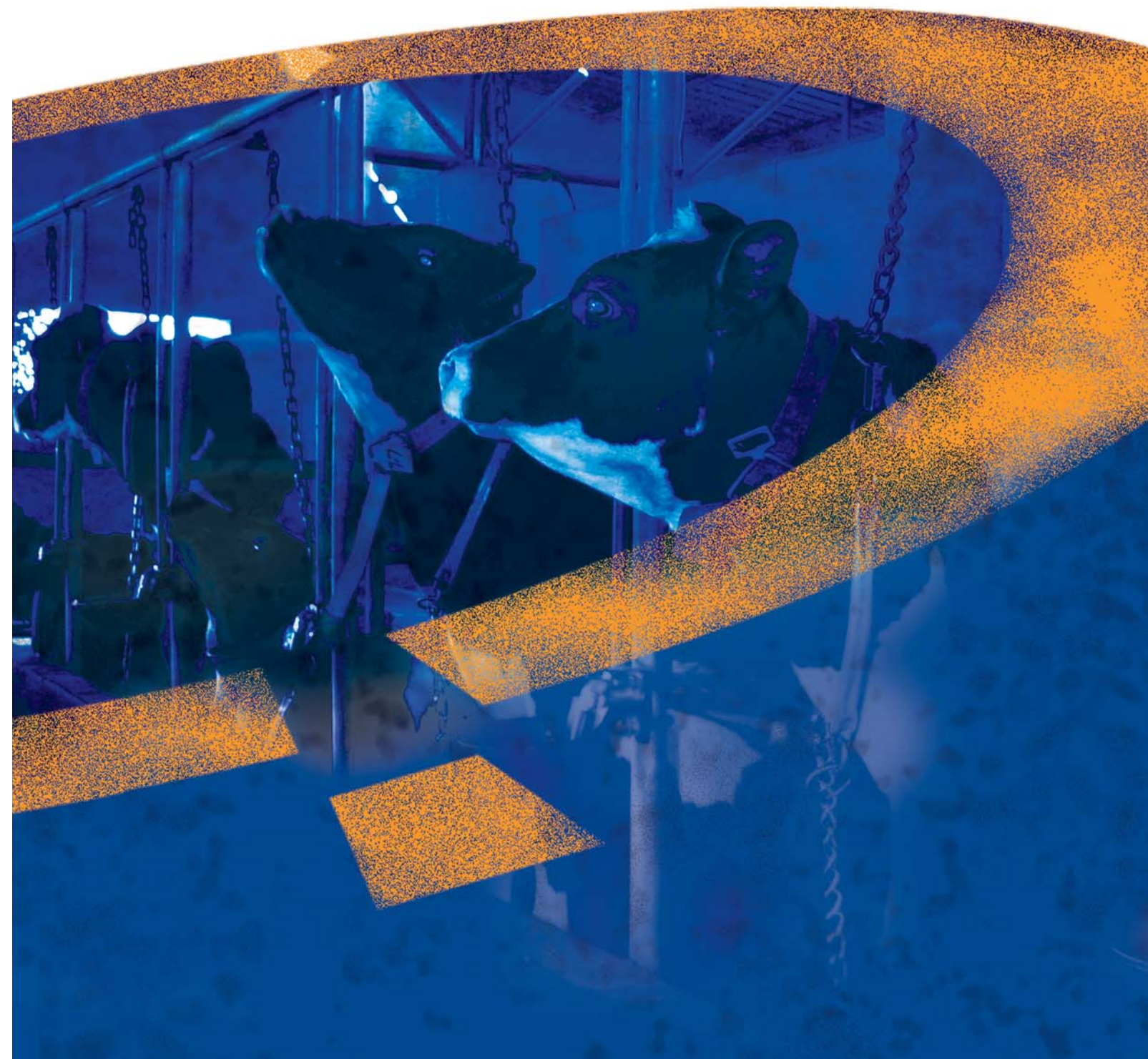
In deep litter systems NEPOREX is best applied around 3 days after dung removal (usually every 6 weeks) or re-stocking.



Proven to prevent flies



for Cattle Farmers



Neporex is a key component of the Fly Control Program, part of Novartis Animal Health's Farm Hygiene Program

For further information on Neporex applications and performance please contact Novartis Animal Health Inc. P.O. Box CH-4002 Basel, Switzerland

Neporex is a registered trademark of Novartis AG, Basel, Switzerland. © 2007 Novartis Animal Health Inc., Basel, Switzerland. 20070050

www.flycontrol.novartis.com

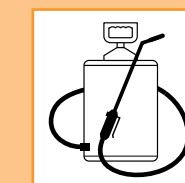
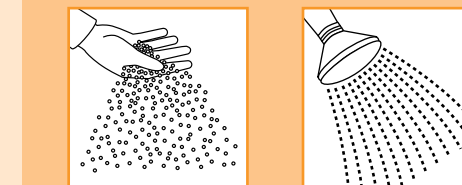
IF THEY DON'T BECOME FLIES THEY DON'T BECOME A PROBLEM FOR CATTLE

How to use NEPOREX

NEPOREX® 2 SG granules are for scattering and watering.

NEPOREX® 50 SP is a soluble powder for watering and spraying.

NEPOREX® can be scattered dry onto wet manure, or dissolved in water as per instructions. It should be applied directly onto the surface of manure and in those areas where house fly eggs are laid. This includes scraping equipment and around drinkers where the litter may be damp.



House flies cost cattle farmers money. They can cause significant reductions in meat and milk yields, and worse, they can spread diseases such as mastitis, roundworm, brucellosis and foot and mouth disease.

As ever, prevention is the best solution. NEPOREX® has been proven to be highly effective for over 20 years in nearly 50 countries and is ideal for cattle farms – it controls house fly larvae before they can develop into flies.

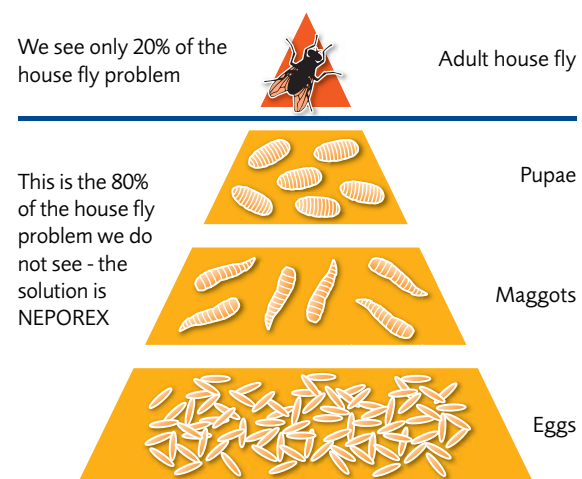
As with all forms of intensive farming, cattle units are subject to an accumulation of manure. This is where house fly eggs are laid and where larvae develop into flies. House flies are particularly attracted by calf dung, especially when milk is part of the feed. It's estimated that up to 90% of the fly population on a dairy farm will develop in calf pens with straw bedding.

How to prevent house fly infestations in cattle facilities

It's important to check not only for adult flies but also for larvae (maggots). To identify these the farmer should use a fork or rake to lift the dung around the edges of walls, posts, partitions and under drinkers and feeders to check for the source of infestation.

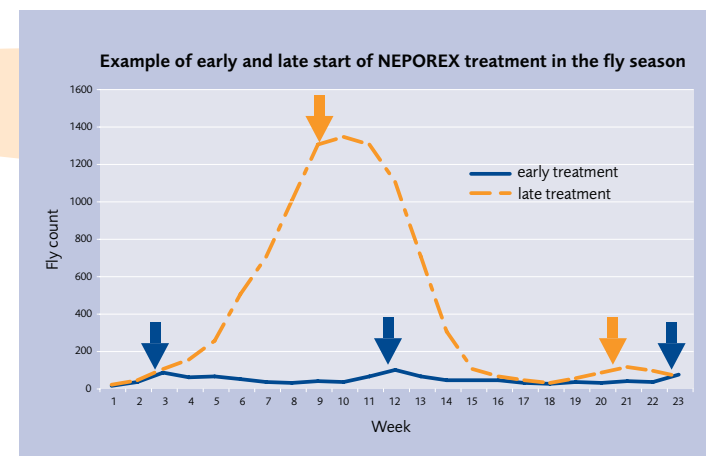
Once the offending areas have been identified, NEPOREX is the product of choice to control the larvae, stemming the infestation at source; no larvae means no flies.

At the same time, it is advisable to apply an adulticide in areas where house flies congregate.



CHECKLIST OF SPECIAL ATTENTION AREAS

- | | |
|--|--|
| <p>ON DAIRY FARMS</p> <ul style="list-style-type: none"> • Maternity stalls and calf pens – manure and urine soaked bedding are an ideal breeding medium for flies • Exterior calf hutches – bedding, manure, urine and feedspills • Spillage areas around drinkers and feeders • Wherever manure accumulates | <p>ON BEEF FARMS</p> <ul style="list-style-type: none"> • Stalls, outdoor pens, calf hutches • Feed and water areas • Spilled feed mixed • Wet areas at the edge of the feedlot • Sick pens • Silage margins • Hay piles |
|--|--|



The benefits of using NEPOREX

- Controls house fly larvae
- Reduced liquefaction of manure, leading to easier removal of manure (saving time and money)
- Better manure quality
- Minimised risk of house fly-borne parasite infestation
- Reduced house fly nuisance to cattle and farmhands
- Fewer complaints from neighbours
- Better relations with health authorities